



The Global Language of Business

Transport Status Request and Notification Business Message Standard (BMS)

Release 3.5.1, Draft, Jan 2022



Document Summary

Document Item	Current Value
Document Name	Transport Status Request and Notification Business Message Standard (BMS)
Document Date	Jan 2022
Document Version	3.5.1
Document Issue	1
Document Status	Draft

Work Request Reference

Date of WR Submission to GSMP:	WR Submitter(s):	Refer to Work Request (WR) Number(s):
02-Jul-2012	GS1 Germany	12-000193
02-Jul-2012	GS1 Germany	12-000194
02-Jul-2012	GS1 Germany	12-000195
02-Jul-2012	GS1 Germany	12-000196
02-Jul-2012	GS1 Germany	12-000197
25-Jun-2014	GS1 Global Office	14-000110
03-Oct-2018	GS1 GO	18-000319

Business Requirements Document (BRAD) Reference

BRAD Title	BRAD Issue Date	BRAD Version
Transport Management		1.0

Document Change History

Date of Change	Version	Changed By	Reason for Change	Summary of Change
12-Jan-2012	BMS 3.0 – Issue 1	Mark Van Eeghem	BMS Release 3.0	See summary of changes
01-May-2013	BMS 3.1 – Issue 1	Coen Janssen	BMS Release 3.1	See summary of changes
15-Sep-2014	BMS 3.2 – Issue 1	Ewa Iwicka	BMS Release 3.2	See summary of changes
01-Mar-2017	BMS 3.3 – Issue 1	Ewa Iwicka	BMS Release 3.3	See summary of changes
15-Oct-2018	BMS 3.4 – Issue 1	Ewa Iwicka	BMS Release 3.4	See summary of changes
04-Feb-2021	BMS 3.5 – Issue 1	Miklos Bolyky	BMS Release 3.5	See summary of changes

Date of Change	Version	Changed By	Reason for Change	Summary of Change
05-Jan-2022	BMS 3.5.1 – Issue 1	Miklos Bolyky	BMS Release 3.5.1	See summary of changes

Disclaimer

GS1®, under its IP Policy, seeks to avoid uncertainty regarding intellectual property claims by requiring the participants in the Work Group that developed this **Transport Status Request and Notification Business Message Standard (BMS)** to agree to grant to GS1 members a royalty-free licence or a RAND licence to Necessary Claims, as that term is defined in the GS1 IP Policy. Furthermore, attention is drawn to the possibility that an implementation of one or more features of this Specification may be the subject of a patent or other intellectual property right that does not involve a Necessary Claim. Any such patent or other intellectual property right is not subject to the licencing obligations of GS1. Moreover, the agreement to grant licences provided under the GS1 IP Policy does not include IP rights and any claims of third parties who were not participants in the Work Group.

Accordingly, GS1 recommends that any organization developing an implementation designed to be in conformance with this Specification should determine whether there are any patents that may encompass a specific implementation that the organisation is developing in compliance with the Specification and whether a licence under a patent or other intellectual property right is needed. Such a determination of a need for licencing should be made in view of the details of the specific system designed by the organisation in consultation with their own patent counsel.

THIS DOCUMENT IS PROVIDED “AS IS” WITH NO WARRANTIES WHATSOEVER, INCLUDING ANY WARRANTY OF MERCHANTABILITY, NONINFRINGEMENT, FITNESS FOR PARTICULAR PURPOSE, OR ANY WARRANTY OTHERWISE ARISING OUT OF THIS SPECIFICATION. GS1 disclaims all liability for any damages arising from use or misuse of this Standard, whether special, indirect, consequential, or compensatory damages, and including liability for infringement of any intellectual property rights, relating to use of information in or reliance upon this document.

GS1 retains the right to make changes to this document at any time, without notice. GS1 makes no warranty for the use of this document and assumes no responsibility for any errors which may appear in the document, nor does it make a commitment to update the information contained herein.

GS1 and the GS1 logo are registered trademarks of GS1 AISBL.

Table of Contents

1	Business Domain View	5
1.1	Introduction	5
1.2	References	5
2	Business Context	6
3	Business Transaction View	6
3.1	Business Transaction – Request Transport Status.....	6
3.2	Report Transport Status.....	7
4	Business Information View	10
4.1	Transport Status Request (message)	10
4.1.1	Transport Status Request – Consignment	13
4.1.2	Transport Status Request – Shipment	14
4.1.3	Transport Status Request - Logistic Unit	16
4.1.4	Transport Status Request - Transport Equipment.....	17
4.1.5	Transport Status Request - Transport Means	18
4.2	Transport Status Notification (message)	19
4.2.1	Transport Status Notification – Consignment	23
4.2.2	Transport Status Notification – Shipment.....	26
4.2.3	Transport Status Notification - Logistic Unit.....	28
4.2.4	Transport Status Notification - Transport Equipment	30
4.2.5	Transport Status Notification - Transport Means	32
4.2.6	Transport Status Notification - Transport Movement.....	34
4.3	Enumerations (message specific)	38
4.4	Code Lists	38
5	Business Message Examples	39
5.1	Example 1.....	39
5.2	Example 2.....	40
5.3	Example 3.....	41
6	Implementation Considerations.....	43
6.1	User Guide	43
6.2	Message Specific Considerations	44
7	Summary of Changes	44
7.1	BMS Release 3.0	44
7.2	BMS Release 3.1	44
7.3	BMS Release 3.2	44
7.4	BMS Release 3.3	46
7.5	BMS Release 3.4	50
7.6	BMS Release 3.5	50
7.7	BMS Release 3.5.1	50
8	Appendices	51
9	Acknowledgements.....	51

9.1.1	Work Group	51
9.1.2	Development Team Members	52

1 Business Domain View

1.1 Introduction

Message Definition

Transport Status Request Message Definition

Message requesting information on the transport status and movements of a transport related object.

Transport Status Notification Message Definition

This scenario allows for the exchange of information regarding the status of transport execution progress at any point (in time or place) within the full transport chain.

Principles

A status message may be sent:

- as the result of a request or requests for information (through the Transport Status Request message) regarding a consignment or consignments;
- on a scheduled basis at predetermined times;
- on the occurrence of a selected event or events;
- on the occurrence of an exceptional event as agreed by the partners involved.

The status message can relate to a status (or statuses) that has (or have) been reached in a transport chain. Additionally, the message may report an exceptional status and the reason for that exceptional status.

In general the exchange of Transport Status Request and Transport Status Notification messages is optional and to be agreed between the LSC and LSP. However, normally at least one Transport Status message is provided by the LSP to the LSC and/or any other agreed party to inform those parties on the final delivery of the goods.

Current technology of IT devices installed on transport means or transport equipment (usually known as vehicle or assets track devices) allows to measure and communicate a set of parameters, such as:

- Temperature
- Position (GPS latitude and longitude)
- Speed
- Engine on/off
- Door status: open/closed
- Refrigeration system on/off
- Etc.

The Transport Status Notification message supports the inclusion of this kind of information.

1.2 References

Reference Name
BRAD Transport Management (GS1, 2009)
Logistics Interoperability Model (GS1, 2007)
BMS eCom Common Library 3.5.1 (GS1, 2022)

Reference Name

BMS Shared Common Library 3.5.1 (GS1, 2022)

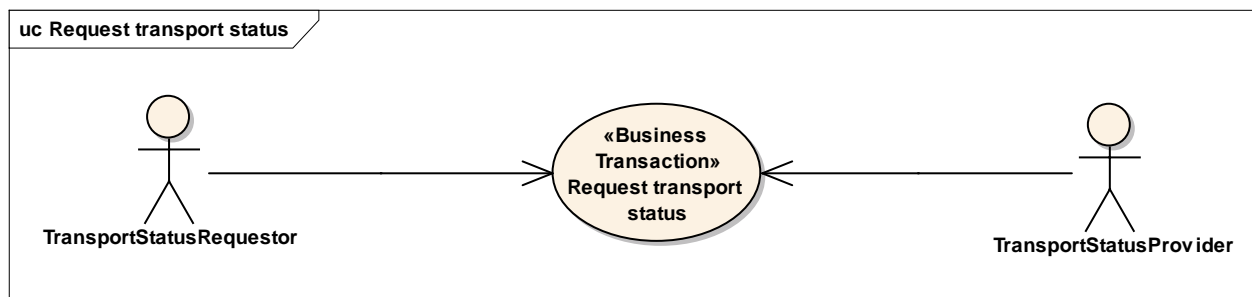
2 Business Context

Context Category	Value(s)
Industry	All
Geopolitical	All
Product	All
Process	Deliver / Transport Management
System Capabilities	GS1 System
Official Constraints	None

3 Business Transaction View

3.1 Business Transaction – Request Transport Status

Use Case Diagram



Use Case Description

Use Case ID	UC-1
Use Case Name	Request transport status
Use Case Description	To request information regarding the status of transport execution progress.
Actors (Goal)	Transport Status Requestor Transport Status Provider
Performance Goals	Not applicable
Preconditions	Interoperation agreement is in place.
Post conditions	Transport status request has been received by the LSS

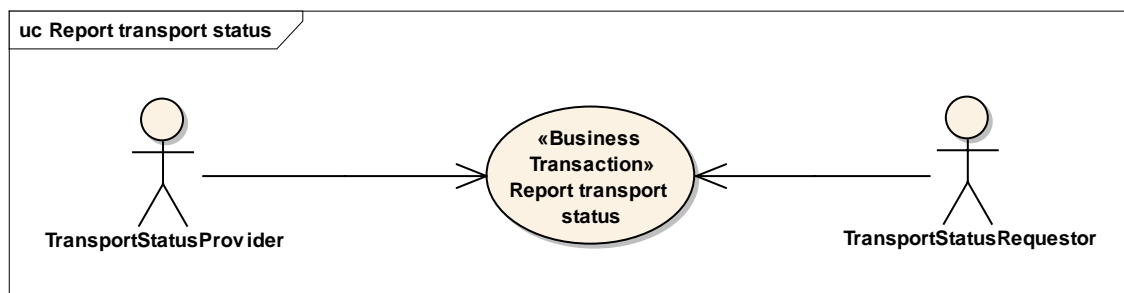
Scenario	Begins when the transport status requestor determines a transport status update is needed. Continues with...		
	Step #	Actor	Activity Step
	1	Requestor	Issues a transport status request
	2	Provider	Receives the transport status request
	Ends when the LSS has processed the transport status request in the transport management system.		
Alternative Scenario	Not applicable		
Related Requirements	Not applicable		
Related Rules	Not applicable		

Activity Diagram(s)

Not applicable

3.2 Report Transport Status

Use Case Diagram



Use Case Description

Use Case ID	UC-2
Use Case Name	Report transport status
Use Case Description	<p>Transport Status: The main objective is to report the transport status between the transport status requestor and the transport status provider.</p> <p>Information on Delivery: The main objective is for the logistics services seller to inform the logistics services buyer on the final execution status of deliveries specified in a transport instruction.</p>
Actors (Goal)	<p>Transport Status Requestor</p> <p>Transport Status Provider</p>
Performance Goals	Not applicable

Preconditions	<p>Either:</p> <p>The transport status provider did receive a transport status request;</p> <p>Or</p> <p>A pre-agreed event type or time interval determines when a transport status notification needs to be sent.</p> <p>Furthermore:</p> <p>The requesting party is indeed entitled to the transport status information.</p>														
Post conditions	Transport status notification has been received by the transport status requestor.														
Scenario	<p>Begins when the transport status provider receives a request.</p> <p>Continues with...</p> <table><tr><th>Step #</th><th>Actor</th><th>Activity Step</th></tr><tr><td>1</td><td>Provider</td><td>Issues a transport status notification</td></tr><tr><td>2</td><td>Requestor</td><td>Receives the transport status notification</td></tr><tr><td></td><td></td><td></td></tr></table> <p>Ends when the requestor has processed the transport status notification.</p>			Step #	Actor	Activity Step	1	Provider	Issues a transport status notification	2	Requestor	Receives the transport status notification			
Step #	Actor	Activity Step													
1	Provider	Issues a transport status notification													
2	Requestor	Receives the transport status notification													
Alternative Scenario	<p>Begins when the transport status provider determines it is time to send a transport status notification.</p> <p>Continues with...</p> <table><tr><th>Step #</th><th>Actor</th><th>Activity Step</th></tr><tr><td>1</td><td>Provider</td><td>Issues a transport status notification</td></tr><tr><td>2</td><td>Requestor</td><td>Receives the transport status notification</td></tr><tr><td></td><td></td><td></td></tr></table> <p>Ends when the requestor has processed the transport status notification.</p>			Step #	Actor	Activity Step	1	Provider	Issues a transport status notification	2	Requestor	Receives the transport status notification			
Step #	Actor	Activity Step													
1	Provider	Issues a transport status notification													
2	Requestor	Receives the transport status notification													
Related Requirements	Not applicable														
Related Rules	Not applicable														

Activity Diagram(s)

Not applicable

Sequence Diagram(s)

Figure: Report Transport Status with prior request

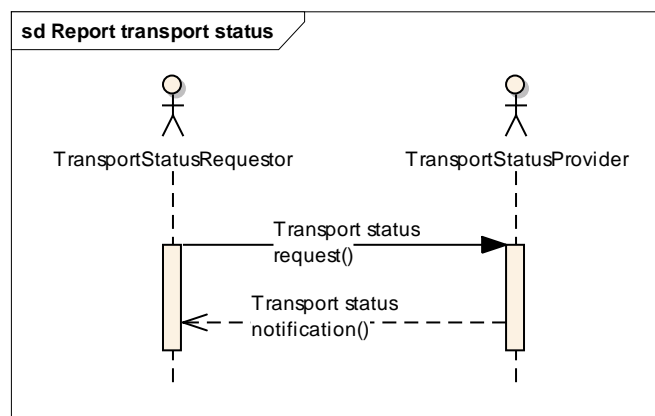
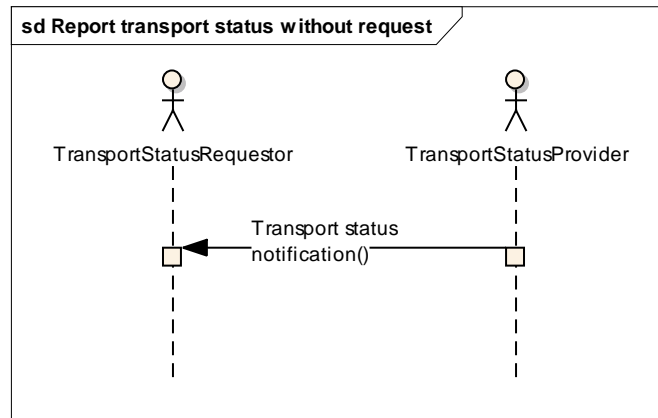


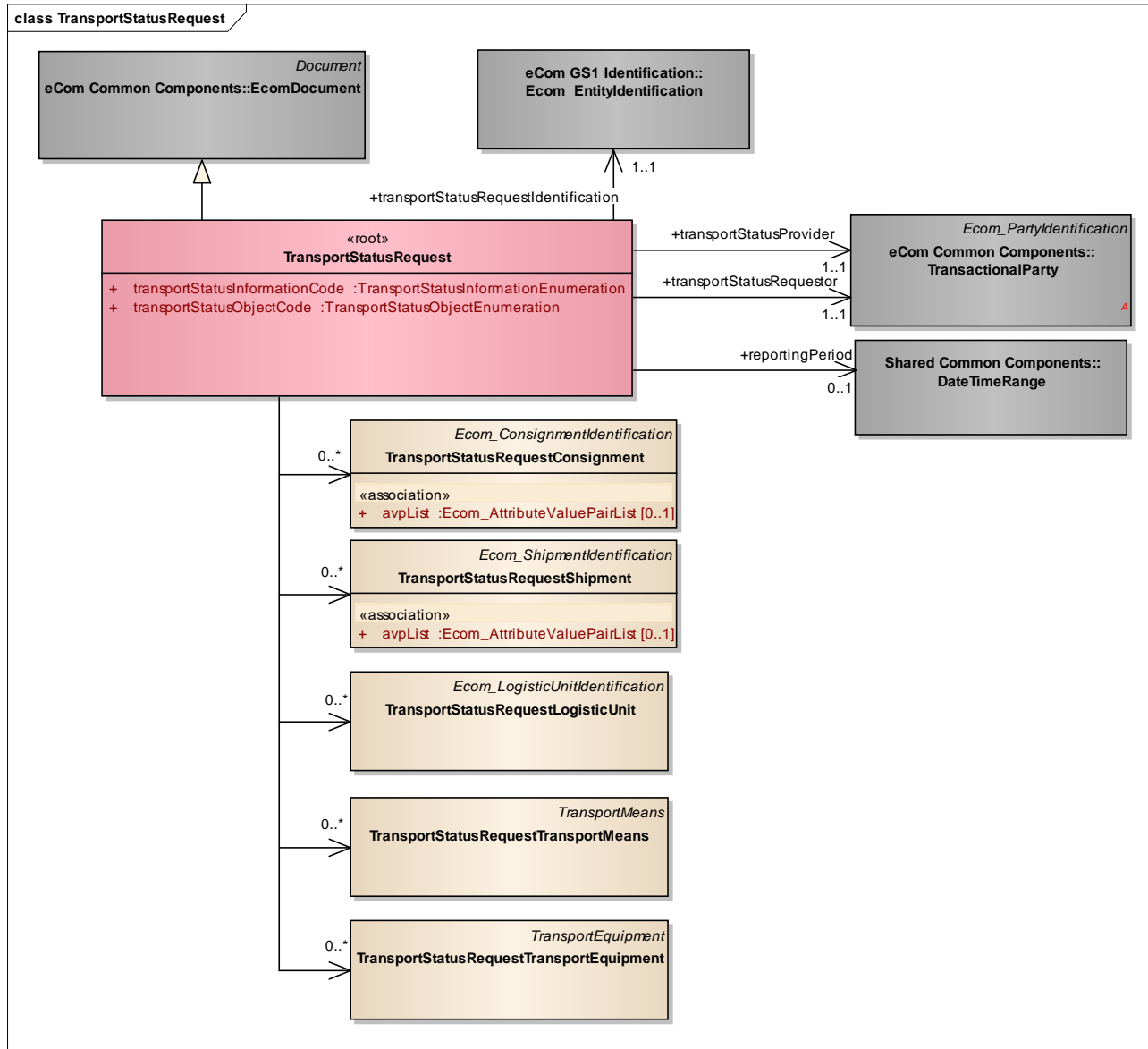
Figure: Report Transport Status without prior request



4 Business Information View

4.1 Transport Status Request (message)

Class diagram



GDD report

The content of the TransportStatusRequest class, its structure and component definitions can be accessed in the Global Data Dictionary:

http://apps.gs1.org/GDD/bms/Version3_4/Pages/bieDetails.aspx?semanticURN=urn:gs1:gdd:bie:TransportStatusRequest

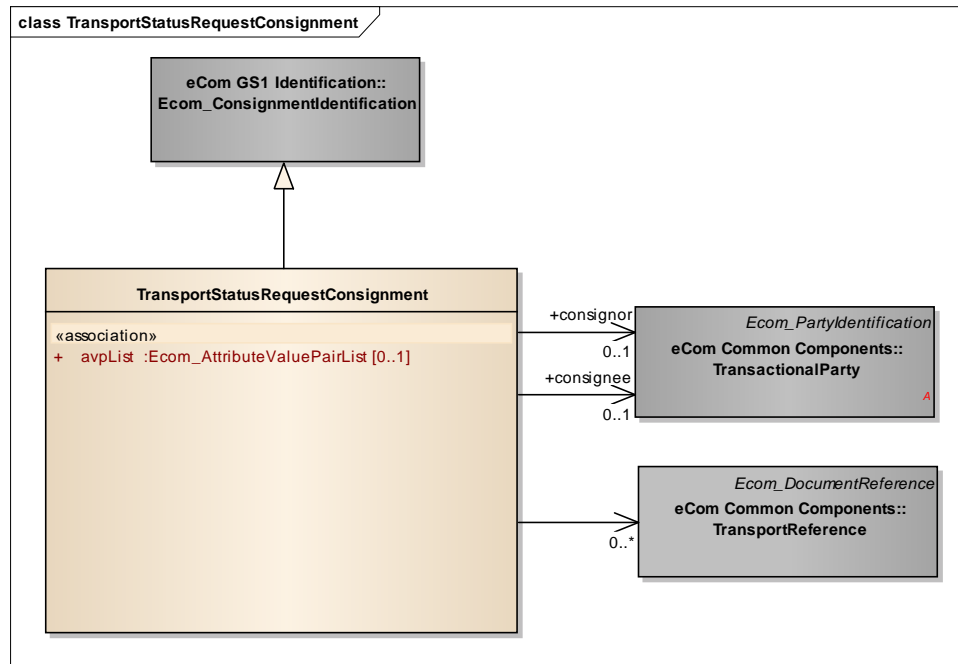
Content	Attribute / Role	Datatype / Secondaryclass	Multiplicity	Definition	Requirements
TransportStatusRequest				Message requesting information on the transport status and movements of a transport related object.	
Association		TransportStatusRequestShipment	0..*	Information identifying the shipment for which transport status information is being requested.	
Association	transportStatusProvider	TransactionalParty	1..1	A party that provides transport status information to another party.	
Association		TransportStatusRequestTransportEquipment	0..*	Information identifying the piece of transport equipment for which transport status information is being requested.	
Association		TransportStatusRequestLogisticUnit	0..*	Information identifying the logistic unit for which transport status information is being requested.	
Association		TransportStatusRequestTransportMeans	0..*	Information identifying the transport means for which transport status information is being requested.	
Generalization		EcomDocument		Basic information about the content of the message including version number, creation date and time.	WR 14-000110
Association	reportingPeriod	DateTimeRange	0..1	The date time range for which transport status information is being requested.	BRAD new requirement
Association		TransportStatusRequestConsignment	0..*	Information identifying the consignment for which transport status information is being requested.	
Association	transportStatusRequestor	TransactionalParty	1..1	A party that requests transport status information from another party.	
Association	transportStatusRequestIdentification	Ecom_EntityIdentification	1..1	The identification of the transport status request document.	
Attribute	transportStatusInformationCode	TransportStatusInformationEnumeration	1..1	Code specifying the type of transport status information that is being requested. Example: STATUS_ONLY.	
Attribute	transportStatusObjectCode	TransportStatusObjectEnumeration	1..1	Code specifying the type of object for which transport status information is being requested. Example: CONSIGNMENT.	



Note: Reference Shared Common Library Business Message (BMS) Release 3.5.1 and eCom Domain Common Library Business Message (BMS) Release 3.5.1 for all common information.

4.1.1 Transport Status Request – Consignment

Class Diagram



GDD Report

The content of the **TransportStatusRequestConsignment** class, its structure and component definitions can be accessed in the Global Data Dictionary: http://apps.gs1.org/GDD/bms/Version3_4/Pages/bieDetails.aspx?semanticURN=urn:gs1:gdd:bie:TransportStatusRequestConsignment

Content	Attribute / Role	Datatype / Secondaryclass	Multiplicity	Definition	Requirements
TransportStatusRequestConsignment				Information identifying the consignment for which transport status information is being requested.	
Association	consignor	TransactionalParty	0..1	The party despatching a consignment of goods.	BRAD TM CON1

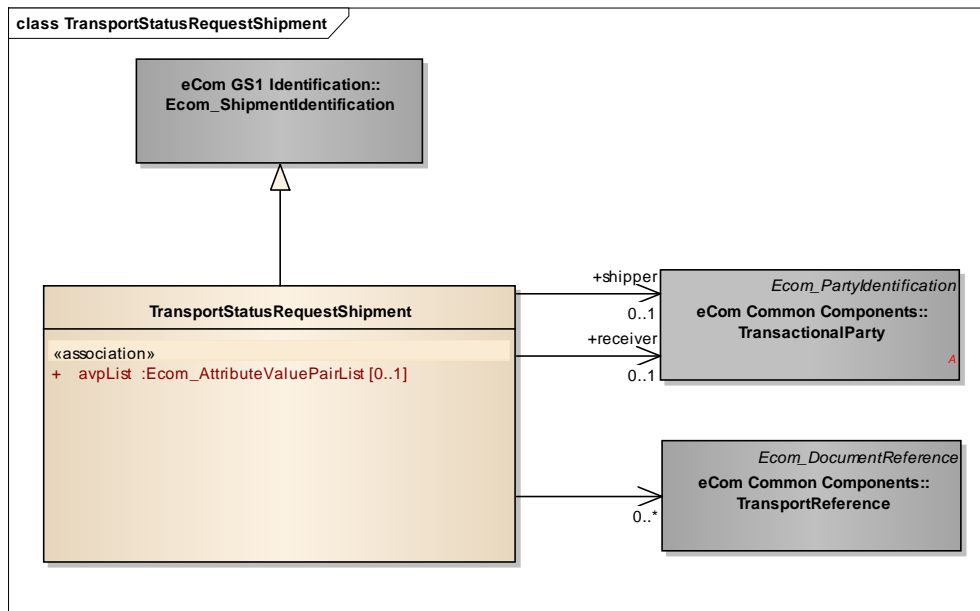
Content	Attribute / Role	Datatype / Secondaryclass	Multiplicity	Definition	Requirements
Generalization		Ecom_ConsignmentIdentification		The unique identifier for this consignment.	BRAD TM CON3 WR 15-000314
Association	consignee	TransactionalParty	0..1	The party receiving a consignment of goods.	BRAD TM CON1
Association		TransportReference	0..*	References to the commercial transaction or to transport or legal documents related to the consignment.	BRAD TM CON19
Attribute	avpList	Ecom_AttributeValuePairList	0..1	Temporary attributes introduced between minor versions.	WR 14-000110



Note: Reference Shared Common Library Business Message (BMS) Release 3.5.1 and eCom Domain Common Library Business Message (BMS) Release 3.5.1 for all common information.

4.1.2 Transport Status Request – Shipment

Class Diagram



GDD Report

The content of the TransportStatusRequestShipment class, its structure and component definitions can be accessed in the Global Data Dictionary:

http://apps.gs1.org/GDD/bms/Version3_4/Pages/bieDetails.aspx?semanticURN=urn:gs1:gdd:bie:TransportStatusRequestShipment

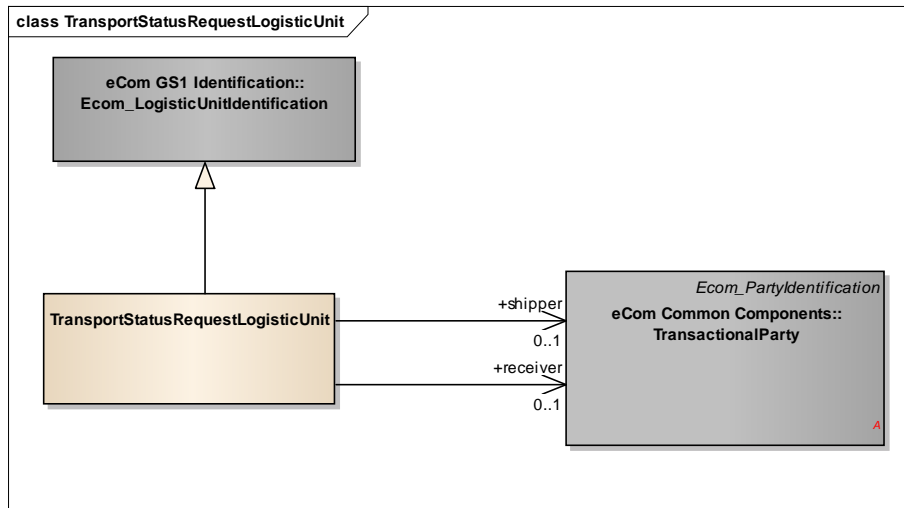
Content	Attribute / Role	Datatype / Secondaryclass	Multiplicity	Definition	Requirements
TransportStatusRequestShipment				Information identifying the shipment for which transport status information is being requested.	
Association	shipper	TransactionalParty	0..1	A party which engages in shipping this shipment of goods.	BRAD TM SHM1
Association	receiver	TransactionalParty	0..1	A party which engages in receiving this shipment of goods.	BRAD TM SHM1
Generalization		Ecom_ShipmentIdentification		The unique identifier for this shipment.	BRAD TM SHM4 WR 15-000314
Association		TransportReference	0..*	References to the commercial transaction or to transport and legal documents related to the shipment.	BRAD TM SHM16
Attribute	avpList	Ecom_AttributeValuePairList	0..1	Temporary attributes introduced between minor versions.	WR 14-000110



Note: Reference Shared Common Library Business Message (BMS) Release 3.5.1 and eCom Domain Common Library Business Message (BMS) Release 3.5.1 for all common information.

4.1.3 Transport Status Request - Logistic Unit

Class Diagram



GDD Report

The content of the TransportStatusRequestLogisticUnit class, its structure and component definitions can be accessed in the Global Data Dictionary: http://apps.gs1.org/GDD/bms/Version3_4/Pages/bieDetails.aspx?semanticURN=urn:gs1:gdd:bie:TransportStatusRequestLogisticUnit

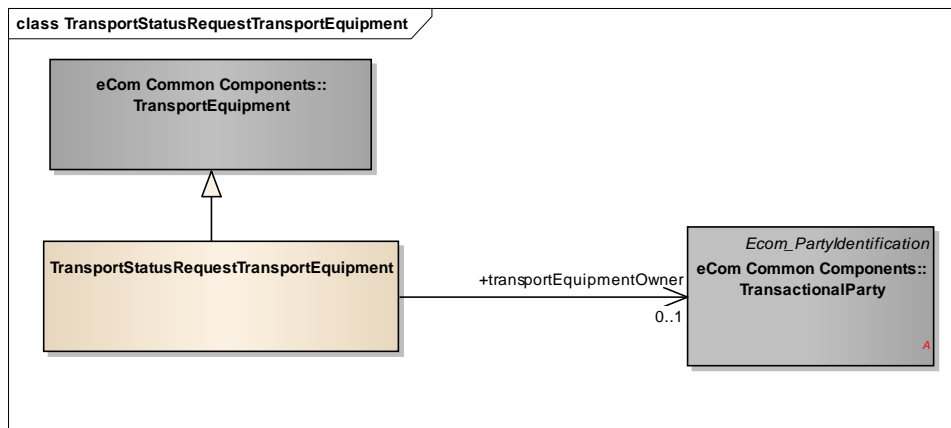
Content	Multiplicity	Attribute / Role	Datatype /Secondary class	Definition	Requirements
TransportStatusRequestLogisticUnit				Information identifying the logistic unit for which transport status information is being requested.	
Generalization			Ecom_LogisticUnitIdentification	The unique identifier for this logistic unit.	WR 15-000314
Association	0..1	shipper	TransactionalParty	A party which engages in shipping this shipment of goods.	
Association	0..1	receiver	TransactionalParty	A party which engages in receiving this shipment of goods.	



Note: Reference Shared Common Library Business Message (BMS) Release 3.5.1 and eCom Domain Common Library Business Message (BMS) Release 3.5.1 for all common information.

4.1.4 Transport Status Request - Transport Equipment

Class Diagram



GDD Report

The content of the TransportStatusRequestTransportEquipment class, its structure and component definitions can be accessed in the Global Data Dictionary:

http://apps.gs1.org/GDD/bms/Version3_4/Pages/bieDetails.aspx?semanticURN=urn:gs1:gdd:bie:TransportStatusRequestTransportEquipment

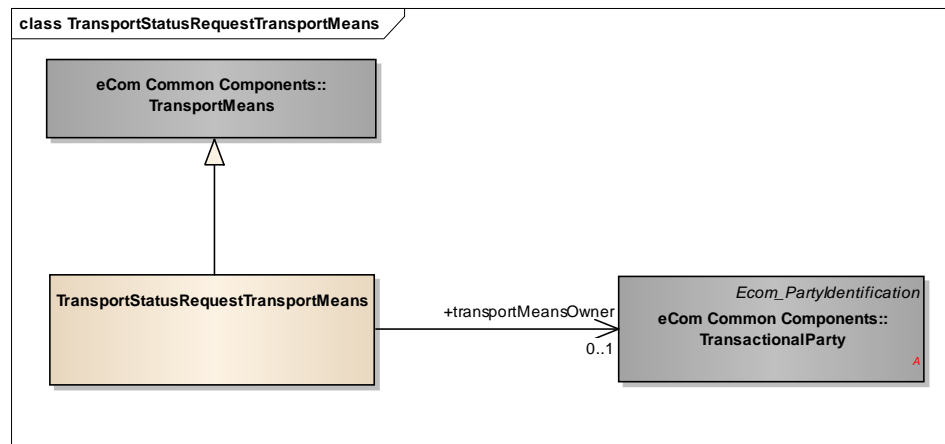
Content	Multiplicity	Attribute / Role	Datatype /Secondary class	Definition	Requirements
TransportStatusRequestTransportEquipment				Information identifying the piece of transport equipment for which transport status information is being requested.	
Generalization			TransportEquipment	Details describing and identifying the piece of transport equipment.	BRAD TM TEQ1,7
Association	0..1	transportEquipmentOwner	TransactionalParty	The party who owns the piece of transport equipment.	BRAD TM - new requirement



Note: Reference Shared Common Library Business Message (BMS) Release 3.5.1 and eCom Domain Common Library Business Message (BMS) Release 3.5.1 for all common information.

4.1.5 Transport Status Request - Transport Means

Class Diagram



GDD Report

The content of the **TransportStatusRequestTransportMeans** class, its structure and component definitions can be accessed in the Global Data Dictionary: http://apps.gs1.org/GDD/bms/Version3_4/Pages/bieDetails.aspx?semanticURN=urn:gs1:gdd:bie:TransportStatusRequestTransportMeans

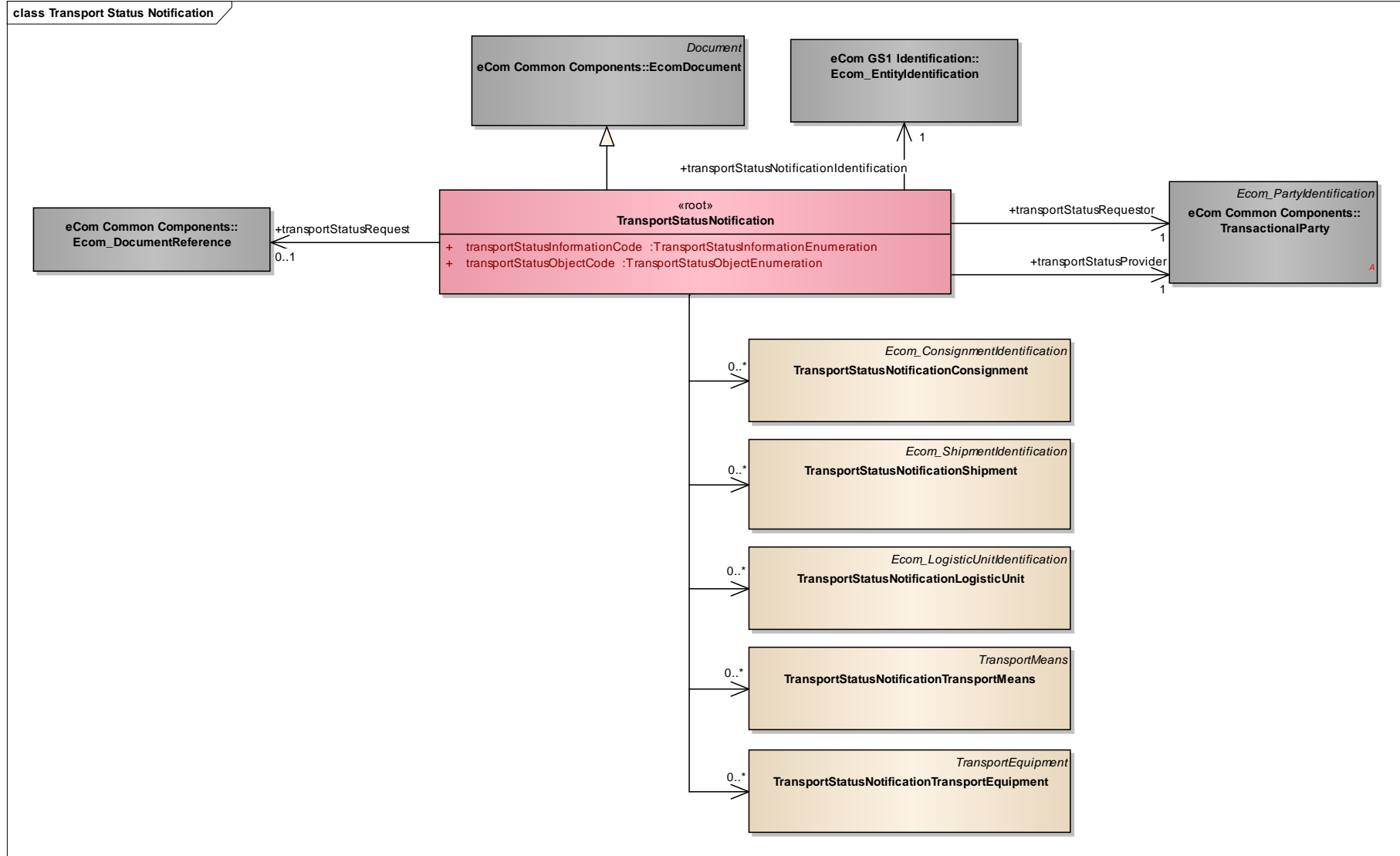
Content	Multiplicity	Attribute / Role	Datatype /Secondary class	Definition	Requirements
TransportStatusRequestTransportMeans				Information identifying the transport means for which transport status information is being requested.	
Generalization			TransportMeans	Details describing and identifying the transport means.	BRAD TM TME1,2,3
Association	0..1	transportMeansOwner	TransactionalParty	The party who owns the transport means	BRAD TM - new requirement



Note: Reference Shared Common Library Business Message (BMS) Release 3.5.1 and eCom Domain Common Library Business Message (BMS) Release 3.5.1 for all common information.

4.2 Transport Status Notification (message)

Class Diagram



GDD Report

The content of the TransportStatusNotification class, its structure and component definitions can be accessed in the Global Data Dictionary:

http://apps.gs1.org/GDD/bms/Version3_4/Pages/bieDetails.aspx?semanticURN=urn:gs1:gdd:bie:TransportStatusNotification

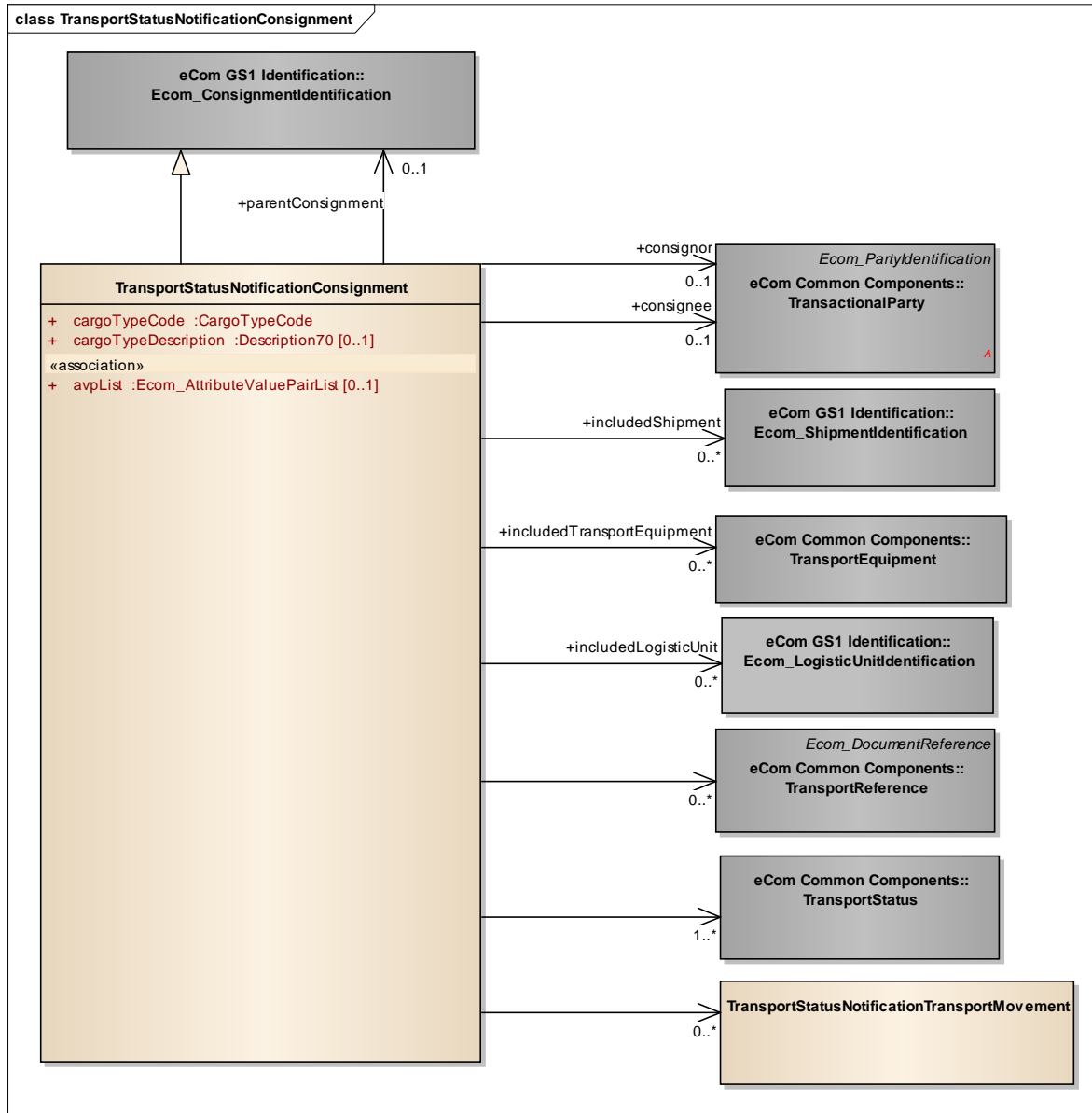
Content	Attribute / Role	Datatype /Secondary class	Multiplicity	Definition	Requirements
TransportStatusNotification				Message providing information on the transport status and movements of a transport related object.	
Association		TransportStatusNotificationShipment	0..*	Information on the status and movements of a shipment.	
Association	transportStatusRequestor	TransactionalParty	1..1	A party that requests transport status information from another party.	
Association		TransportStatusNotificationLogisticUnit	0..*	Information on the status and movements of a logistic unit.	
Association		TransportStatusNotificationConsignment	0..*	Information on the status and movements of a consignment.	
Association	transportStatusNotificationIdentification	Ecom_EntityIdentification	1..1	The identification of the transport status notification document.	WR 15-000314
Association	transportStatusRequest	Ecom_DocumentReference	0..1	Optional reference to the transport status request that triggered the sending of the transport status notification.	WR 15-000314
Association		TransportStatusNotificationTransportEquipment	0..*	Information on the status, movements and event log of one or more pieces of transport equipment.	
Association		TransportStatusNotificationTransportMeans	0..*	Information on the status, movements and event log of one or more means of transport.	
Generalization		EcomDocument		Basic information about the content of the message including version number, creation date and time.	WR 14-000110
Association	transportStatusProvider	TransactionalParty	1..1	A party that provides transport status information to another party.	
Attribute	transportStatusInformationCode	TransportStatusInformationEnumeration	1..1	Code specifying the type of transport status information that is being reported. Example: STATUS_ONLY.	
Attribute	transportStatusObjectCode	TransportStatusObjectEnumeration	1..1	Code specifying the type of object for which transport status information is being reported. Example: CONSIGNMENT.	



Note: Reference Shared Common Library Business Message (BMS) Release 3.5.1 and eCom Domain Common Library Business Message (BMS) Release 3.5.1 for all common information.

4.2.1 Transport Status Notification – Consignment

Class Diagram



**GDD Report**

The content of the TransportStatusNotificationConsignment class, its structure and component definitions can be accessed in the Global Data Dictionary: http://apps.gs1.org/GDD/bms/Version3_4/Pages/bieDetails.aspx?semanticURN=urn:gs1:gdd:bie:TransportStatusNotificationConsignment

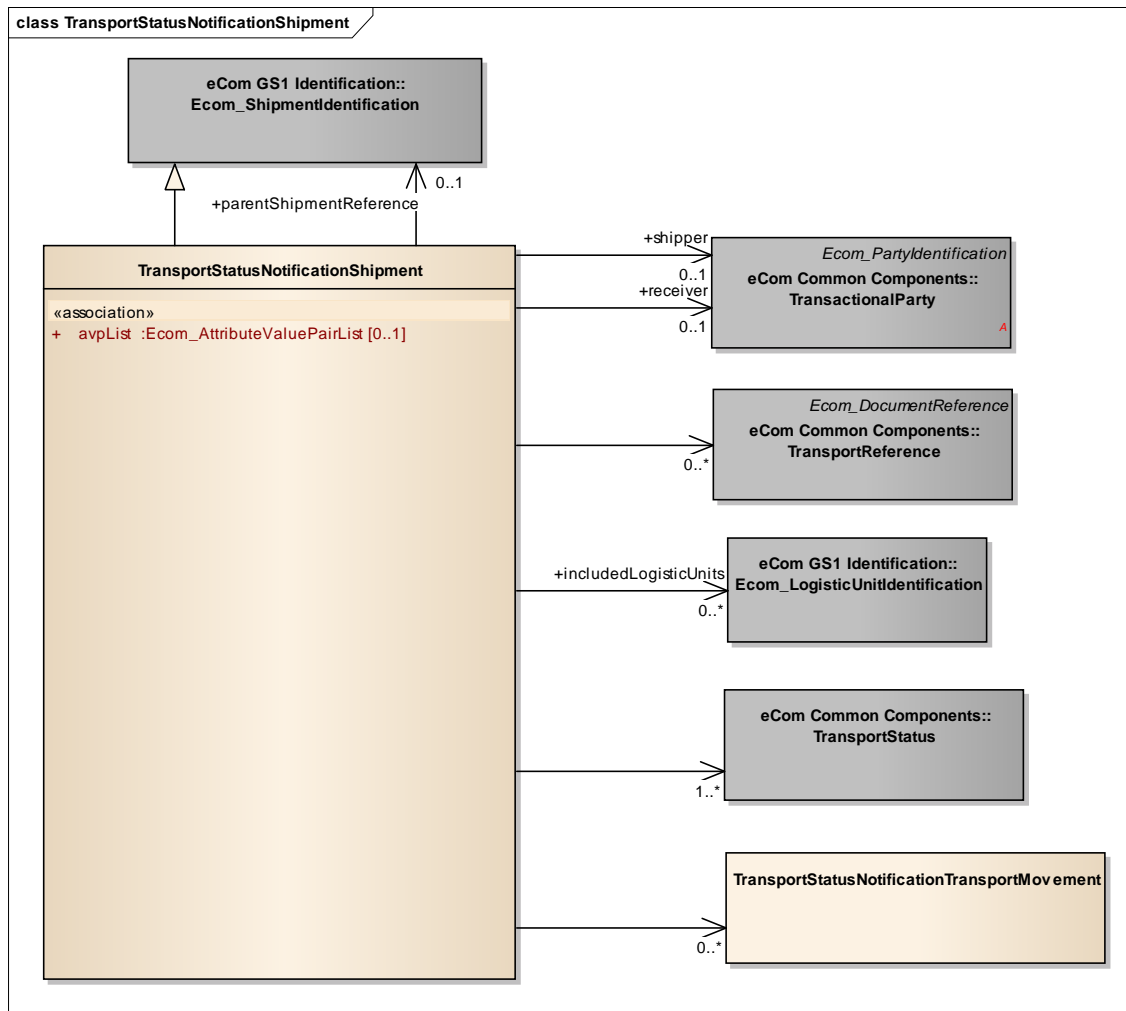
Content	Attribute / Role	Datatype /Secondary class	Multiplicity	Definition	Requirements
TransportStatusNotificationConsignment				Information on the status and movements of a consignment.	
Association		TransportReference	0..*	References to the commercial transaction or to transport or legal documents related to the consignment.	BRAD TM CON19
Association	parentConsignment	Ecom_ConsignmentIdentification	0..1	Reference to a consignment that contains this consignment (and several other consignments)	BRAD TM CON22 WR 15-000314
Association		TransportStatusNotificationTransportMovement	0..*	The transport movement details for this consignment.	
Association	includedShipment	Ecom_ShipmentIdentification	0..*	Reference to the shipment(s) contained in this consignment.	BRAD TM CON28 WR 15-000314
Association	consignee	TransactionalParty	0..1	The party receiving a consignment of goods.	BRAD TM CON1
Association	consignor	TransactionalParty	0..1	The party despatching a consignment of goods.	BRAD TM CON1
Association		TransportStatus	1..*	The transport status details for this consignment.	
Association	includedLogisticUnit	Ecom_LogisticUnitIdentification	0..*	Identification of the logistic units contained in the consignment.	WR 15-000314
Association	includedTransportEquipment	TransportEquipment	0..*	Details on the transport equipment contained in the consignment.	
Generalization		ConsignmentIdentification		The unique identifier for this consignment.	BRAD TM CON2
Attribute	cargoTypeCode	CargoTypeCode	1..1	Code specifying the classification of a type of cargo for example hazardous cargo.	BRAD CON8, CIT4, SHI4
Attribute	cargoTypeDescription	Description70	0..1	Free text specifying the classification of a type of cargo.	BRAD CON8, CIT4, SHI5
Attribute	avpList	Ecom_AttributeValuePairList	0..1	Temporary attributes introduced between minor versions.	WR 14-000110



Note: Reference Shared Common Library Business Message (BMS) Release 3.5.1 and eCom Domain Common Library Business Message (BMS) Release 3.5.1 for all common information.

4.2.2 Transport Status Notification – Shipment

Class Diagram



GDD Report

The content of the TransportStatusNotificationShipment class, its structure and component definitions can be accessed in the Global Data Dictionary:

http://apps.gs1.org/GDD/bms/Version3_4/Pages/bieDetails.aspx?semanticURN=urn:gs1:gdd:bie:TransportStatusNotificationShipment

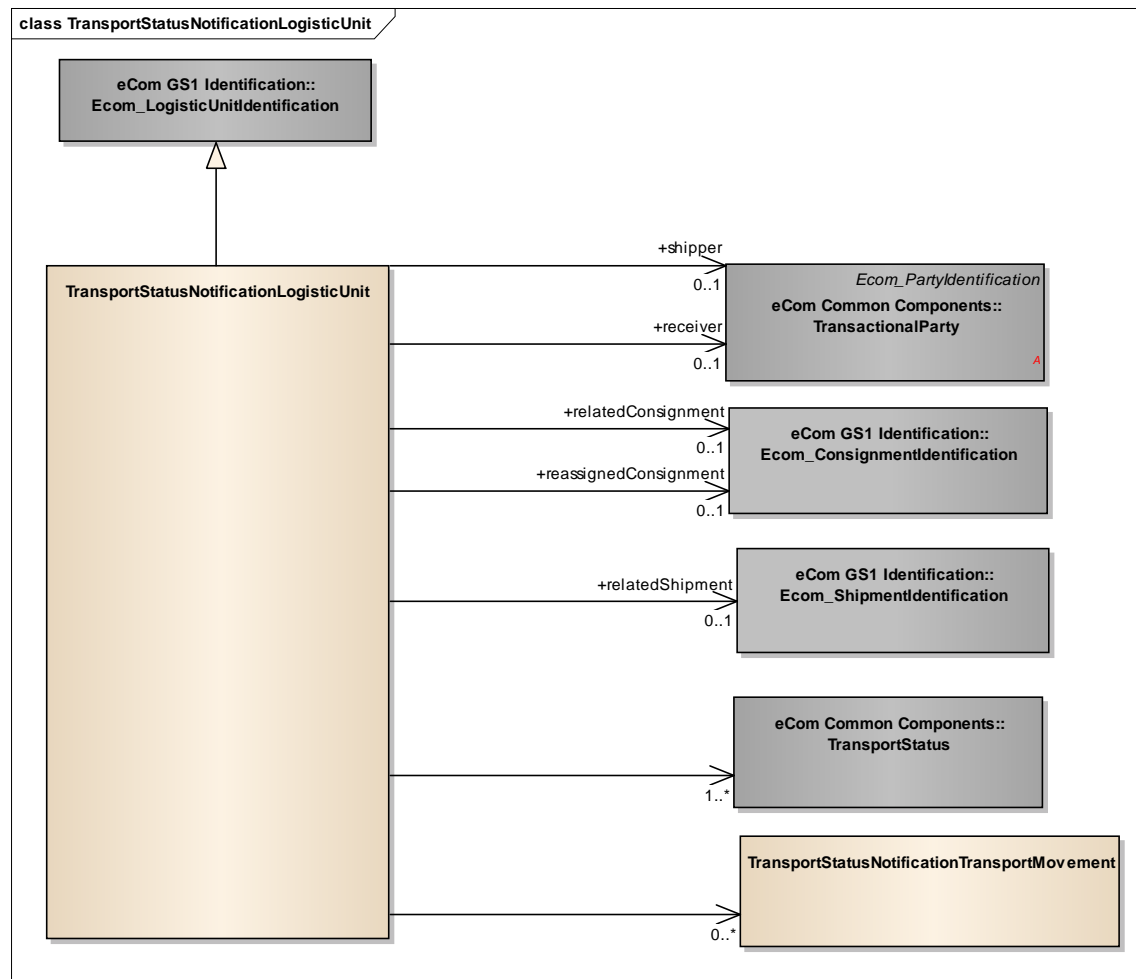
Content	Attribute / Role	Datatype /Secondary class	Multiplicity	Definition	Requirements
TransportStatusNotificationShipment				Information on the status and movements of a shipment.	
Association	receiver	TransactionalParty	0..1	A party which engages in receiving this shipment of goods.	BRAD TM SHM1
Association		TransportStatusNotificationTransportMovement	0..*	The transport movement details for this shipment.	BRAD TM SHM3
Association		TransportReference	0..*	References to the commercial transaction or to transport or legal documents related to the shipment.	BRAD TM SHM16
Association		TransportStatus	1..*	The transport status details for this shipment.	
Association	shipper	TransactionalParty	0..1	A party which engages in shipping this shipment of goods.	BRAD TM SHM1
Association	parentShipmentReference	Ecom_ShipmentIdentification	0..1	The unique identifier of a shipment in which this shipment is included.	WR 15-000314
Association	includedLogisticUnits	Ecom_LogisticUnitIdentification	0..*	Identification of the logistic units contained in the shipment.	WR 15-000314
Generalization		Ecom_ShipmentIdentification		The unique identifier for this shipment.	BRAD TM SHM4 WR 15-000314
Attribute	avpList	Ecom_AttributeValuePairList	0..1	Temporary attributes introduced between minor versions.	WR 14-000110



Note: Reference Shared Common Library Business Message (BMS) Release 3.5.1 and eCom Domain Common Library Business Message (BMS) Release 3.5.1 for all common information.

4.2.3 Transport Status Notification - Logistic Unit

Class Diagram



GDD Report

The content of the TransportStatusNotificationLogisticUnit class, its structure and component definitions can be accessed in the Global Data Dictionary: http://apps.gs1.org/GDD/bms/Version3_4/Pages/bieDetails.aspx?semanticURN=urn:gs1:gdd:bie:TransportStatusNotificationLogisticUnit

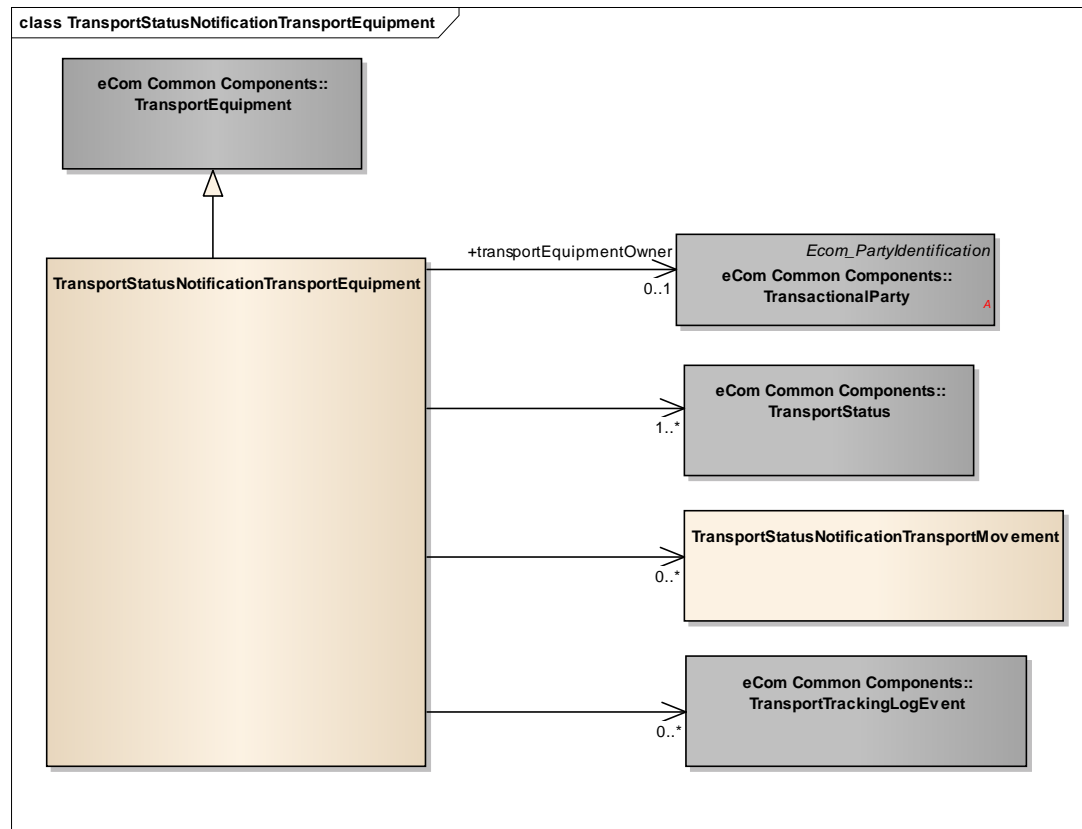
Content	Datatype / Secondary class	Attribute / Role	Multiplicity	Definition	Requirements
TransportStatusNotificationLogisticUnit				Information on the status and movements of a logistic unit.	
Association	Ecom_ShipmentIdentification	relatedShipment	0..1	Identification of the shipment in which the logistic unit is contained.	WR 15-000314
Association	Ecom_ConsignmentIdentification	reassignedConsignment	0..1	Identification of the consignment to which the logistic unit has been reassigned.	WR 15-000314
Association	TransactionalParty	shipper	0..1	A party which engages in shipping this logistic unit.	
Association	TransactionalParty	receiver	0..1	A party which engages in receiving this logistic unit.	
Association	TransportStatus		1..*	The transport status details for this logistic unit.	
Association	TransportStatusNotificationTransportMovement		0..*	The transport movement details for this logistic unit.	
Generalization	Ecom_LogisticUnitIdentification			The unique identifier for this logistic unit.	WR 15-000314
Association	Ecom_ConsignmentIdentification	relatedConsignment	0..1	Identification of the consignment in which the logistic unit is contained.	WR 15-000314



Note: Reference Shared Common Library Business Message (BMS) Release 3.5.1 and eCom Domain Common Library Business Message (BMS) Release 3.5.1 for all common information.

4.2.4 Transport Status Notification - Transport Equipment

Class Diagram



GDD Report

The content of the TransportStatusNotificationTransportEquipment class, its structure and component definitions can be accessed in the Global Data Dictionary:

http://apps.gs1.org/GDD/bms/Version3_4/Pages/bieDetails.aspx?semanticURN=urn:gs1:gdd:bie:TransportStatusNotificationTransportEquipment

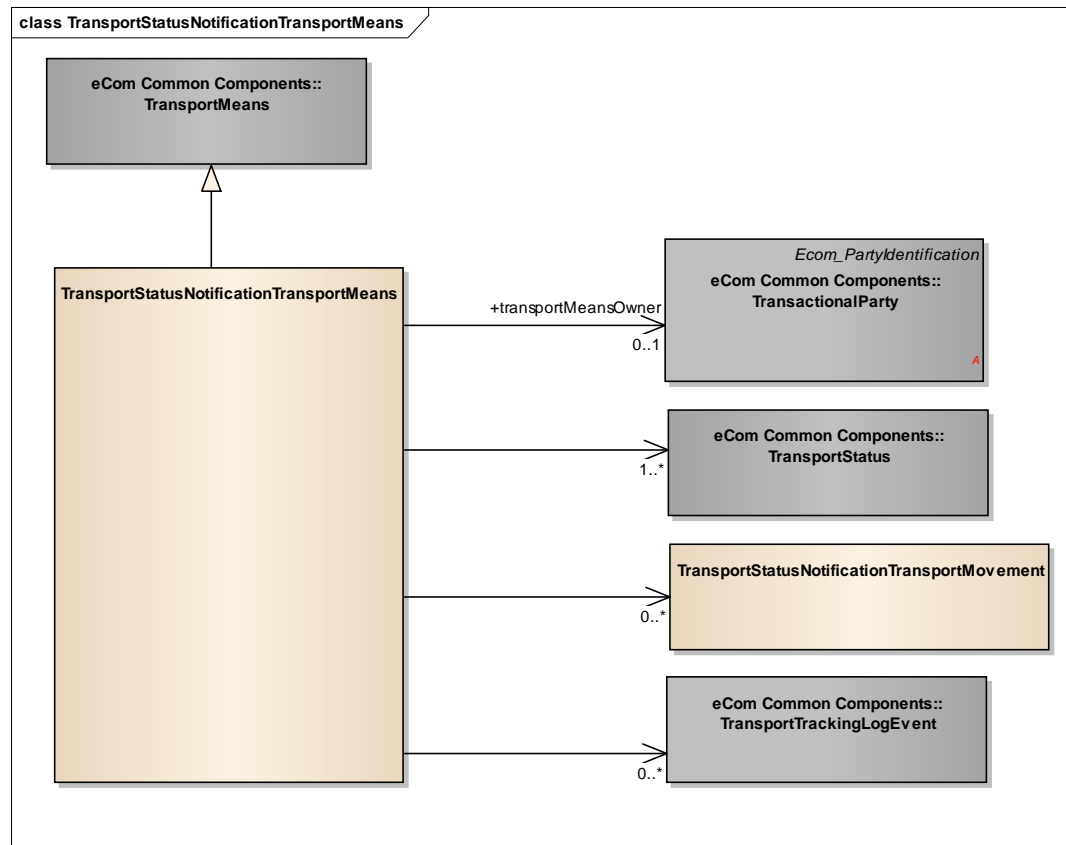
Content	Datatype / Secondary class	Attribute / Role	Multiplicity	Definition	Requirements
TransportStatusNotificationTransportEquipment				Information on the status, movements and event log of a piece of transport equipment.	
Generalization	TransportEquipment			Details describing and identifying the piece of transport equipment.	BRAD TM TEQ1,7
Association	TransactionalParty	transportEquipmentOwner	0..1	The party who owns the piece of transport equipment.	BRAD TM - new requirement
Association	TransportStatus		1..*	The transport status details for this piece of transport equipment.	
Association	TransportStatusNotificationTransportMovement		0..*	The transport movement details for this piece of transport equipment.	
Association	TransportTrackingLogEvent		0..*	The transport tracking details for this piece of transport equipment.	



Note: Reference Shared Common Library Business Message (BMS) Release 3.5.1 and eCom Domain Common Library Business Message (BMS) Release 3.5.1 for all common information.

4.2.5 Transport Status Notification - Transport Means

Class Diagram



GDD Report

The content of the TransportStatusNotificationTransportMeans class, its structure and component definitions can be accessed in the Global Data Dictionary:

http://apps.gs1.org/GDD/bms/Version3_4/Pages/bieDetails.aspx?semanticURN=urn:gs1:gdd:bie:TransportStatusNotificationTransportMeans

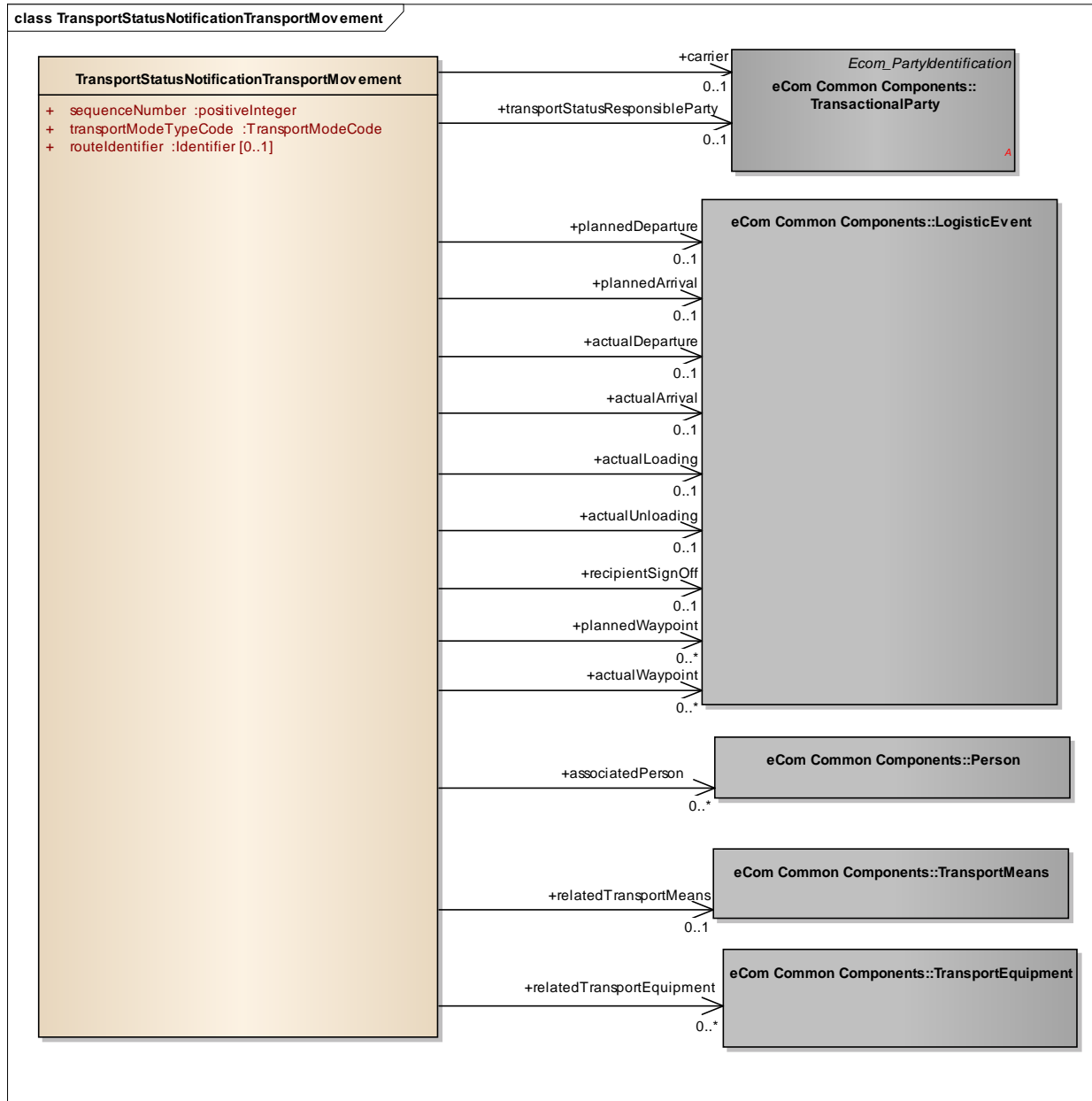
Content	Datatype / Secondary class	Attribute / Role	Multiplicity	Definition	Requirements
TransportStatusNotificationTransportMeans				Information on the status, movements and event log of a transport means.	
Generalization	TransportMeans			Details describing and identifying the transport means.	BRAD TM TME1,2,3
Association	TransactionalParty	transportMeansOwner	0..1	The party who owns the transport means	BRAD TM - new requirement
Association	TransportStatus		1..*	The transport status details for this transport means.	
Association	TransportStatusNotificationTransportMovement		0..*	The transport movement details for this transport means.	
Association	TransportTrackingLogEvent		0..*	The transport tracking details for this transport means.	



Note: Reference Shared Common Library Business Message (BMS) Release 3.5.1 and eCom Domain Common Library Business Message (BMS) Release 3.5.1 for all common information.

4.2.6 Transport Status Notification - Transport Movement

Class Diagram



GDD Report

The content of the TransportStatusNotificationTransportMovement class, its structure and component definitions can be accessed in the Global Data Dictionary:

http://apps.gs1.org/GDD/bms/Version3_4/Pages/bieDetails.aspx?semanticURN=urn:gs1:gdd:bie:TransportStatusNotificationTransportMovement

Content	Datatype /Secondary class	Attribute / Role	Multiplicity	Definition	Requirements
TransportStatusNotificationTransportMovement					
Association	TransportMeans	relatedTransportMeans	0..1	The type of vehicle, aircraft, vessel or other device used for the transport of goods in this transport movement.	BRAD TM TMV19
Association	TransportEquipment	relatedTransportEquipment	0..*	The type of trailer, container, ULD or other device used for the transport of goods in this transport movement.	BRAD TM TMV19
Association	TransactionalParty	carrier	0..1	A party that physically transports goods from one place to another.	BRAD TM TMV5
Association	Person	associatedPerson	0..*	A person associated with the execution of this transport movement, for example the driver.	BRAD TM TMV9
Association	TransactionalParty	transportStatusResponsibleParty	0..1	Party in charge of collecting and forwarding the information about the transport movement.	BRAD TM TMV17
Association	LogisticEvent	recipientSignOff	0..1	Details on the sign-off of the receipt at the arrival location, such as the responsible person.	BRAD TM - new requirement
Association	LogisticEvent	actualArrival	0..1	The actual time of arrival on the designated arrival location.	BRAD TM TMV11
Association	LogisticEvent	actualDeparture	0..1	The actual time of departure from the designated departure location.	BRAD TM TMV10
Association	LogisticEvent	actualLoading	0..1	The actual time and location of loading.	BRAD TM TMV14
Association	LogisticEvent	actualUnloading	0..1	The actual time and location of unloading.	BRAD TM TMV15
Association	LogisticEvent	plannedDeparture	0..1	The expected time of departure from the designated departure location.	BRAD TM TMV12

Content	Datatype / Secondary class	Attribute / Role	Multiplicity	Definition	Requirements
Association	LogisticEvent	plannedWaypoint	0..*	An administrative procedure taking place at a specific location that may have an effect on the lead time of a transport movement, such as dangerous goods handling, customs clearance, ...	
Association	LogisticEvent	actualWaypoint	0..*	An administrative procedure taking place at a specific location that may have an effect on the lead time of a transport movement, such as dangerous goods handling, customs clearance, ...	
Association	LogisticEvent	plannedArrival	0..1	The expected time of arrival on the designated arrival location.	BRAD TM TMV13
Attribute	positiveInteger	sequenceNumber	1..1	Unique number identifying the sequence of this transport movement with respect to the other specified movements.	
Attribute	TransportModeCode	transportModeTypeCode	1..1	Code specifying the transportation mode used for this transport movement.	BRAD TMV2
Attribute	Identifier	routeIdentifier	0..1	Unique identifier of the standard route that will be used for this transport movement.	BRAD TMV8



Note: Reference Shared Common Library Business Message (BMS) Release 3.5.1 and eCom Domain Common Library Business Message (BMS) Release 3.5.1 for all common information.

4.3 Enumerations (message specific)

Not applicable

4.4 Code Lists

Class	Codelist	GDD Link
TransportStatusRequest, TransportStatusNotification	TransportStatusInformationEnumeration	http://apps.gs1.org/GDD/Pages/clDetails.aspx?semanticURN=urn:gs1:gdd:cl:TransportStatusInformationEnumeration
TransportStatusRequest, TransportStatusNotification	TransportStatusObjectEnumeration	http://apps.gs1.org/GDD/Pages/clDetails.aspx?semanticURN=urn:gs1:gdd:cl:TransportStatusObjectEnumeration
TransportStatusNotificationConsignment	CargoTypeCode	http://apps.gs1.org/GDD/Pages/clDetails.aspx?semanticURN=urn:gs1:gdd:cl:CargoTypeCode
TransportStatusNotificationTransportMovement	TransportModeCode	http://apps.gs1.org/GDD/Pages/clDetails.aspx?semanticURN=urn:gs1:gdd:cl:TransportModeCode



Note: Refer to the Global Data Dictionary (GDD) for the code values.

5 Business Message Examples

5.1 Example 1

This is an example of the Transport Status Request message used in Consignment Status and Movement process.

Party Information

GS1 Global Location Number	Party Type
7365566156190	Transport Status Requestor
4048623000003	Transport Status Provider
7365566156190	Consignor
7300011234566	Consignee

Message Example 1

Attribute	Value
TransportStatusRequest	
creationDateTime	2011-01-12T12:00:00
documentStatusCode	ORIGINAL
transportStatusObjectCode	CONSIGNMENT
transportStatusInformationCode	STATUS_AND_MOVEMENT
EntityIdentification (+transportStatusRequestIdentification)	
uniqueCreatorIdentification	TRSR00001
TransactionalParty (+transportStatusProvider)	
gln	4048623000003
TransactionalParty (+transportStatusRequestor)	
gln	7365566156190
TransportStatusRequestConsignment	
ginc	7365566156191234567
TransactionalParty (+consignor)	
gln	7365566156190
TransactionalParty (+consignee)	
gln	7300011234566

5.2 Example 2

This is an example of the Transport Status Notification message used in Consignment Status and Movement process.

Message Example 2

Attribute	Value
TransportStatusNotification	
creationDateTime	2011-01-12T12:10:00
documentStatus	ORIGINAL
transportStatusInformationCode	STATUS_AND_MOVEMENT
transportStatusObjectCode	CONSIGNMENT
EntityIdentification (+transportStatusNotificationIdentification)	
uniqueCreatorIdentification	TRSN00001
TransactionalParty (+transportStatusRequestor)	
gln	7365566156190
TransactionalParty (+transportStatusProvider)	
gln	4048623000003
DocumentReference (+transportStatusRequest)	
uniqueCreatorIdentification	TRSR00001
TransportStatusNotificationConsignment	
Ginc	7365566156191234567
cargoType	21
TransactionalParty (+consignor)	
gln	7365566156190
TransactionalParty (+consignee)	
gln	7300011234566
TransportStatus	
transportStatusConditionCode	29
TransportStatusNotificationTransportMovement	
sequenceNumber	1
transportModeTypeCode	30
LogisticEvent (+actualDeparture)	
DateOptionalTime (+logisticEventDateTime)	
date	2011-01-14
time	11:08:00
LogisticLocation	
Address	
city	Stockholm
LogisticEvent (+actualArrival)	
DateOptionalTime (+logisticEventDateTime)	
date	2011-01-14

Attribute	Value
time	18:08:00
LogisticLocation	
Address	
city	Lund

5.3 Example 3

This is an example of the Transport Status Notification message used in Shipment - Information on Delivery (IoD) process.

Message Example 3

Attribute	Value
TransportStatusNotification	
creationDateTime	2011-01-15T14:10:00
documentStatusCode	ORIGINAL
transportStatusInformationCode	INFORMATION_ON_DELIVERY
transportStatusObjectCode	SHIPMENT
EntityIdentification (+transportStatusNotificationIdentification)	
uniqueCreatorIdentification	TRSN00001
TransactionalParty (+transportStatusRequestor)	
gln	7365566156190
TransactionalParty (+transportStatusProvider)	
gln	4048623000003
TransportStatusNotificationShipment	
gsin	37365560000834055
LogisticUnitIdentification (+includedLogisticUnits)	
sscc	373655600812834054
LogisticUnitIdentification (+includedLogisticUnits)	
sscc	373655600812834061
LogisticUnitIdentification (+includedLogisticUnits)	
sscc	373655600812834078
TransportStatus	
transportStatusConditionCode	21
TransportStatusNotificationTransportMovement	
sequenceNumber	1
transportModeTypeCode	30
TransactionalParty (+carrier)	
Address	
name	DSV
LogisticEvent (+actualDeparture)	
DateOptionalTime (+logisticEventDateTime)	



Attribute	Value
date	2009-01-13
time	09:00:00
LogisticLocation	
Address	
city	Eindhoven
LogisticEvent (+actualArrival)	
DateOptionalTime (+logisticEventDateTime)	
date	2009-01-13
time	18:00:00
LogisticLocation	
Address	
city	Rotterdam
TransportMeans (+relatedTransportMeans)	
transportMeansType	31
transportMeansID	TF-69-XX
TransportEquipment (+relatedTransportEquipment)	
transportEquipmentTypeCode	14
ReturnableAssetIdentification (+individualReturnableAssetTypeIdentification)	
grai	00000000000000
additionalReturnableAssetIdentification	TRL-ABC-912; OWNER_ASSIGNED
TransportStatusNotificationTransportMovement	
sequenceNumber	2
transportModeTypeCode	10
TransactionalParty (+carrier)	
Address	
name	P&O
LogisticEvent (+actualDeparture)	
DateOptionalTime (+logisticEventDateTime)	
date	2009-01-14
time	14:00:00
LogisticLocation	
unLocationCode	NL RTM
LogisticEvent (+actualArrival)	
DateOptionalTime (+logisticEventDateTime)	
date	2009-02-23
Time	18:00:00
LogisticLocation	
unLocationCode	ZA CPT
TransportMeans (+relatedTransportMeans)	

Attribute	Value
transportMeansType	13
transportMeansName	SS Kopenhagen
TransportEquipment (+relatedTransportEquipment)	
transportEquipmentTypeCode	20
ReturnableAssetIdentification(+individualReturnableAssetTypeIdentification)	
grai	000000000000000
additionalReturnableAssetIdentification	BCN001213; OWNER_ASSIGNED
TransportStatusNotificationTransportMovement	
sequenceNumber	3
transportModeTypeCode	30
TransactionalParty (+carrier)	
Address	
name	Boer Trucking
LogisticEvent (+actualDeparture)	
DateOptionalTime (+logisticEventDateTime)	
date	2009-02-25
time	09:00:00
LogisticLocation	
Address	
city	Cape Town
LogisticEvent (+actualArrival)	
DateOptionalTime (+logisticEventDateTime)	
date	2009-02-28
time	18:00:00
LogisticLocation	
Address	
city	Johannesburg
TransportMeans (+relatedTransportMeans)	
transportMeansType	31
transportMeansID	123-XYZ-76

6 Implementation Considerations

6.1 User Guide

The Functional User Guide contains more information about the structure and content of the Transport Status Request and Notification message:

http://www.gs1.org/docs/ecom/xml/3/3.4/eCom-Trade_messages.html#TransportStatusRequestandNotification

6.2 Message Specific Considerations

Not applicable

7 Summary of Changes

Any change in the GS1 standards is done based on the Work Request (WR) submitted by the GS1 User Companies or Member Organisations. All Work Requests are documented in the Work Request system available on the GS1 website: <http://wr.gs1.org>. The system is accessible to registered users. New visitors need to register first, to be able to access it. WRs can be searched by the number referenced in tables below, see: Search Work Requests. The number starts with the two last digits of the year when it was submitted, followed by the consecutive number within that year.



Note: WRs submitted earlier than February 2012 should be searched in Old Change Requests.

7.1 BMS Release 3.0

First publication

7.2 BMS Release 3.1

Change	Associated CR
<ul style="list-style-type: none"> TransportStatusRequest: changed cardinality of associations to Consignment, Shipment, Log Unit, Transport Means and Transport Equipment from 0..1 to 0..* TransportStatusNotification: changed cardinality of associations to Consignment, Shipment, Log Unit from 0..1 to 0..* 	12-000193 12-000194 12-000195 12-000196 12-000197

7.3 BMS Release 3.2

Change	Associated WR
<p>Added Attribute Value Pair at the root, line item and sub line item levels</p> <div> <p>class TransportStatusRequest - maintenance view</p> <pre> «root» TransportStatusRequest + transportStatusInformationCode :TransportStatusInformationEnumeration + transportStatusObjectCode :TransportStatusObjectEnumeration maintenance Change: (Complete) 3.1 changed cardinality of associations to Consignment, Shipment, Log Unit, Transport Means and Transport Equipment from 0..1 to 0..* Change: (Verified) 3.2 changed generalisation from Document to eComDocument class to include AVP (WR 14-110) </pre> </div>	14-000110

Change	Associated WR
<div>Added Attribute Value Pair at the root, line item and sub line item levels</div> <div><div>class TransportStatusRequestConsignment - maintenance view</div><div><div><div>TransportStatusRequestConsignment</div><div>+ «association» avpList :Ecom_AttributeValuePairList [0..1]</div><div><div>maintenance</div><div>Change: (Verified) 3.2 added +avpList (WR 14-110)</div></div></div></div></div>	14-000110
<div>Added Attribute Value Pair at the root, line item and sub line item levels</div> <div><div>class TransportStatusRequestShipment - maintenance view</div><div><div><div>TransportStatusRequestShipment</div><div>+ «association» avpList :Ecom_AttributeValuePairList [0..1]</div><div><div>maintenance</div><div>Change: (Verified) 3.2 added +avpList (WR 14-110)</div></div></div></div></div>	14-000110
<div>Added Attribute Value Pair at the root, line item and sub line item levels</div> <div><div>class Transport Status Notification - maintenance view</div><div><div><div>«root» TransportStatusNotification</div><div>+ transportStatusInformationCode: TransportStatusInformationEnumeration + transportStatusObjectCode: TransportStatusObjectEnumeration</div><div><div>maintenance</div><div>Change: (Complete) 3.1 changed cardinality of associations to Consignment, Shipment, Log Unit from 0..1 to 0..* Change: (Verified) 3.2 changed generalisation from Document to eComDocument class to include AVP (WR 14-110)</div></div></div></div></div>	14-000110
<div>Added Attribute Value Pair at the root, line item and sub line item levels</div> <div><div>class TransportStatusNotificationConsignment - maintenance ...</div><div><div><div>TransportStatusNotificationConsignment</div><div>+ cargoTypeCode :CargoTypeCode + cargoTypeDescription :Description70 [0..1] + «association» avpList :Ecom_AttributeValuePairList [0..1]</div><div><div>maintenance</div><div>Change: (Verified) 3.2 added +avpList (WR 14-110)</div></div></div></div></div>	14-000110

Change	Associated WR
<p>Added Attribute Value Pair at the root, line item and sub line item levels</p> <div> <p>class TransportStatusNotificationShipment - maintenance view</p> <div> <p>TransportStatusNotificationShipment</p> <p>+ «association» avpList :Ecom_AttributeValuePairList [0..1]</p> <p><i>maintenance</i></p> <p>Change: (Verified) 3.2 added +avpList (WR 14-110)</p> </div> </div>	14-000110

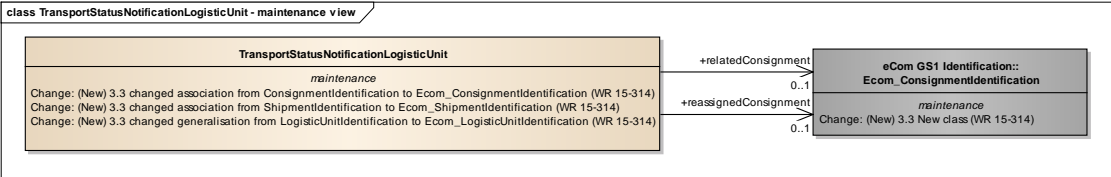
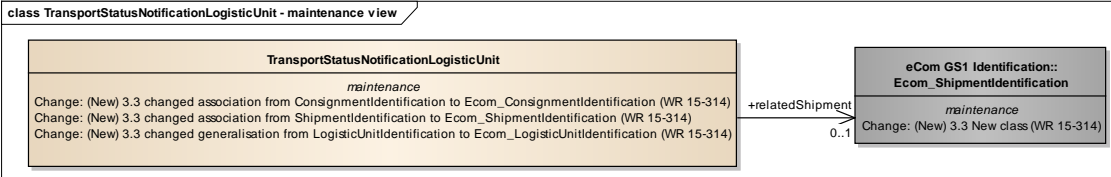
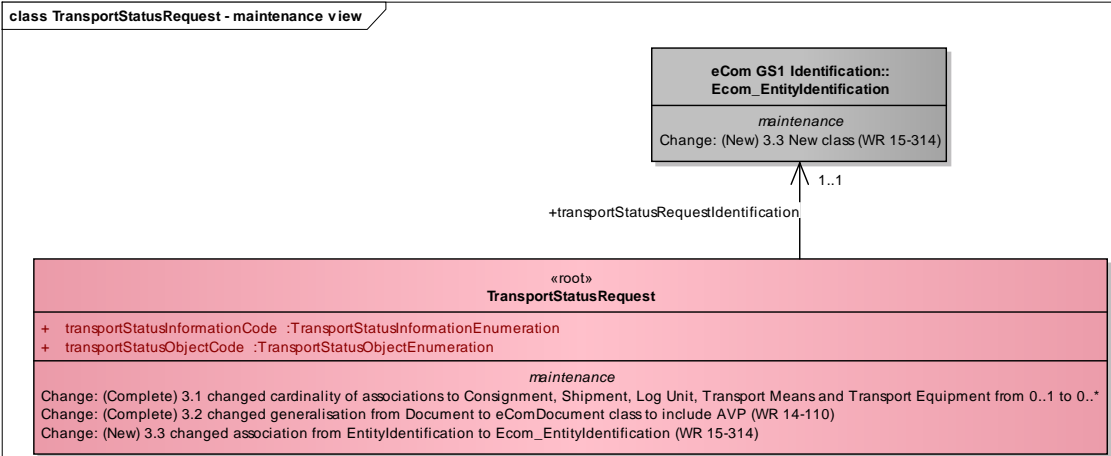
7.4 BMS Release 3.3

Change	Associated WR
<p>Created Ecom_EntityIdentification class and changed association from the previous EntityIdentification</p> <div> <p>class Transport Status Notification - maintenance view</p> <div> <div> <p>eCom GS1 Identification:: Ecom_EntityIdentification</p> <p><i>maintenance</i></p> <p>Change: (New) 3.3 New class (WR 15-314)</p> </div> <div> <p>+transportStatusNotificationIdentification</p> <p>1</p> </div> </div> <div> <p>«root» TransportStatusNotification</p> <p>+ transportStatusInformationCode :TransportStatusInformationEnumeration</p> <p>+ transportStatusObjectCode :TransportStatusObjectEnumeration</p> <p><i>maintenance</i></p> <p>Change: (Complete) 3.1 changed cardinality of associations to Consignment, Shipment, Log Unit from 0..1 to 0..*</p> <p>Change: (Complete) 3.2 changed generalisation from Document to eComDocument class to include AVP (WR 14-110)</p> <p>Change: (New) 3.3 changed association from EntityIdentification to Ecom_EntityIdentification (WR 15-314)</p> <p>Change: (New) 3.3 changed association named +transportStatusRequest from DocumentReference to Ecom_DocumentReference (WR 15-314)</p> </div> </div>	15-000314 Make GS1 identification keys optional in GS1 EDI XML
<p>Created Ecom_DocumentReference class and changed association from the previous DocumentReference</p> <div> <p>class Transport Status Notification - maintenance view</p> <div> <div> <p>eCom Common Components::Ecom_DocumentReference</p> <p><i>maintenance</i></p> <p>Change: (New) 3.3 added +referencedDocumentId (WR 16-261)</p> <p>Change: (New) 3.3 New class (WR 15-314)</p> </div> <div> <p>+transportStatusRequest</p> <p>0..1</p> </div> </div> <div> <p>«root» TransportStatusNotification</p> <p>+ transportStatusInformationCode :TransportStatusInformationEnumeration</p> <p>+ transportStatusObjectCode :TransportStatusObjectEnumeration</p> <p><i>maintenance</i></p> <p>Change: (Complete) 3.1 changed cardinality of associations to Consignment, Shipment, Log Unit from 0..1 to 0..*</p> <p>Change: (Complete) 3.2 changed generalisation from Document to eComDocument class to include AVP (WR 14-110)</p> <p>Change: (New) 3.3 changed association from EntityIdentification to Ecom_EntityIdentification (WR 15-314)</p> <p>Change: (New) 3.3 changed association named +transportStatusRequest from DocumentReference to Ecom_DocumentReference (WR 15-314)</p> </div> </div>	15-000314 Make GS1 identification keys optional in GS1 EDI XML

Change	Associated WR
<p>Created Ecom_ConsignmentIdentification class and changed association from the previous ConsignmentIdentification</p> <div data-bbox="172 412 1267 981"> <p>class TransportStatusRequestConsignment - maintenance view</p> <div data-bbox="560 463 1082 600"> <p>eCom GS1 Identification::Ecom_ConsignmentIdentification</p> <p><i>maintenance</i></p> <p>Change: (New) 3.3 New class (WR 15-314)</p> </div> <div data-bbox="209 730 1230 947"> <p>TransportStatusRequestConsignment</p> <p>«association»</p> <p>+ avpList :Ecom_AttributeValuePairList [0..1]</p> <p><i>maintenance</i></p> <p>Change: (Complete) 3.2 added +avpList (WR 14-110)</p> <p>Change: (New) 3.3 changed association from ConsignmentIdentification to Ecom_ConsignmentIdentification (WR 15-314)</p> </div> </div>	<p>15-000314</p> <p>Make GS1 identification keys optional in GS1 EDI XML</p>
<p>Created Ecom_ShipmentIdentification class and changed association and generalisation from the previous ShipmentIdentification</p> <div data-bbox="172 1084 1243 1626"> <p>class TransportStatusRequestShipment - maintenance view</p> <div data-bbox="483 1142 1029 1292"> <p>eCom GS1 Identification::Ecom_ShipmentIdentification</p> <p><i>maintenance</i></p> <p>Change: (New) 3.3 New class (WR 15-314)</p> </div> <div data-bbox="209 1386 1206 1592"> <p>TransportStatusRequestShipment</p> <p>«association»</p> <p>+ avpList :Ecom_AttributeValuePairList [0..1]</p> <p><i>maintenance</i></p> <p>Change: (Complete) 3.2 added +avpList (WR 14-110)</p> <p>Change: (New) 3.3 changed association from ShipmentIdentification to Ecom_ShipmentIdentification (WR 15-314)</p> </div> </div>	<p>15-000314</p> <p>Make GS1 identification keys optional in GS1 EDI XML</p>

Change	Associated WR
<p>Created Ecom_LogisticUnitIdentification class and changed association and generalisation from the previous LogisticUnitIdentification</p> <pre> class TransportStatusRequestLogisticUnit - maintenance view classDiagram class Ecom_LogisticUnitIdentification { eCom GS1 Identification:: maintenance Change: (New) 3.3 New class (WR 15-314) } class TransportStatusRequestLogisticUnit { maintenance Change: (New) 3.3 changed association from LogisticUnitIdentification to Ecom_LogisticUnitIdentification (WR 15-314) } Ecom_LogisticUnitIdentification < -- TransportStatusRequestLogisticUnit </pre>	<p>15-000314 Make GS1 identification keys optional in GS1 EDI XML</p>
<p>Created Ecom_ConsignmentIdentification class and changed association from the previous ConsignmentIdentification</p> <pre> class TransportStatusNotificationConsignment - maintenance view classDiagram class Ecom_ConsignmentIdentification { eCom GS1 Identification::Ecom_ConsignmentIdentification maintenance Change: (New) 3.3 New class (WR 15-314) } class TransportStatusNotificationConsignment { + cargoTypeCode :CargoTypeCode + cargoTypeDescription :Description70 [0..1] «association» + avpList :Ecom_AttributeValuePairList [0..1] maintenance Change: (Complete) 3.2 added +avpList (WR 14-110) Change: (New) 3.3 changed association from LogisticUnitIdentification to Ecom_LogisticUnitIdentification (WR 15-314) Change: (New) 3.3 changed association from ShipmentIdentification to Ecom_ShipmentIdentification (WR 15-314) Change: (New) 3.3 changed generalisation and association from ConsignmentIdentification to Ecom_ConsignmentIdentification (WR 15-314) } Ecom_ConsignmentIdentification < -- TransportStatusNotificationConsignment TransportStatusNotificationConsignment --> Ecom_ConsignmentIdentification : +parentConsignment 0..1 </pre>	<p>15-000314 Make GS1 identification keys optional in GS1 EDI XML</p>
<p>Created Ecom_ShipmentIdentification class and changed association and generalisation from the previous ShipmentIdentification</p> <pre> class TransportStatusNotificationConsignment - maintenance view classDiagram class TransportStatusNotificationConsignment { + cargoTypeCode :CargoTypeCode + cargoTypeDescription :Description70 [0..1] «association» + avpList :Ecom_AttributeValuePairList [0..1] maintenance Change: (Complete) 3.2 added +avpList (WR 14-110) Change: (New) 3.3 changed association from LogisticUnitIdentification to Ecom_LogisticUnitIdentification (WR 15-314) Change: (New) 3.3 changed association from ShipmentIdentification to Ecom_ShipmentIdentification (WR 15-314) Change: (New) 3.3 changed generalisation and association from ConsignmentIdentification to Ecom_ConsignmentIdentification (WR 15-314) } class Ecom_ShipmentIdentification { eCom GS1 Identification::Ecom_ShipmentIdentification maintenance Change: (New) 3.3 New class (WR 15-314) } TransportStatusNotificationConsignment --> Ecom_ShipmentIdentification : +includedShipment 0..1 </pre>	<p>15-000314 Make GS1 identification keys optional in GS1 EDI XML</p>

Change	Associated WR
<p>Created Ecom_ShipmentIdentification class and changed association and generalisation from the previous ShipmentIdentification</p> <pre> class TransportStatusNotificationShipment - maintenance view classDiagram class Ecom_GS1_Identification_Ecom_ShipmentIdentification { maintenance Change: (New) 3.3 New class (WR 15-314) } class TransportStatusNotificationShipment { «association» + avpList :Ecom_AttributeValuePairList [0..1] maintenance Change: (Complete) 3.2 added +avpList (WR 14-110) Change: (New) 3.3 changed association from LogisticUnitIdentification to Ecom_LogisticUnitIdentification (WR 15-314) Change: (New) 3.3 changed association from ShipmentIdentification to Ecom_ShipmentIdentification (WR 15-314) } Ecom_GS1_Identification_Ecom_ShipmentIdentification < -- TransportStatusNotificationShipment Ecom_GS1_Identification_Ecom_ShipmentIdentification --> "0..1" TransportStatusNotificationShipment : +parentShipmentReference </pre>	<p>15-000314 Make GS1 identification keys optional in GS1 EDI XML</p>
<p>Created Ecom_LogisticUnitIdentification class and changed association and generalisation from the previous LogisticUnitIdentification</p> <pre> class TransportStatusNotificationShipment - maintenance view classDiagram class TransportStatusNotificationShipment { «association» + avpList :Ecom_AttributeValuePairList [0..1] maintenance Change: (Complete) 3.2 added +avpList (WR 14-110) Change: (New) 3.3 changed association from LogisticUnitIdentification to Ecom_LogisticUnitIdentification (WR 15-314) Change: (New) 3.3 changed association from ShipmentIdentification to Ecom_ShipmentIdentification (WR 15-314) } class Ecom_GS1_Identification_Ecom_LogisticUnitIdentification { maintenance Change: (New) 3.3 New class (WR 15-314) } TransportStatusNotificationShipment --> "0..*" Ecom_GS1_Identification_Ecom_LogisticUnitIdentification : +includedLogisticUnits </pre>	<p>15-000314 Make GS1 identification keys optional in GS1 EDI XML</p>
<p>Created Ecom_LogisticUnitIdentification class and changed association and generalisation from the previous LogisticUnitIdentification</p> <pre> class TransportStatusNotificationLogisticUnit - maintenance view classDiagram class Ecom_GS1_Identification_Ecom_LogisticUnitIdentification { maintenance Change: (New) 3.3 New class (WR 15-314) } class TransportStatusNotificationLogisticUnit { maintenance Change: (New) 3.3 changed association from ConsignmentIdentification to Ecom_ConsignmentIdentification (WR 15-314) Change: (New) 3.3 changed association from ShipmentIdentification to Ecom_ShipmentIdentification (WR 15-314) Change: (New) 3.3 changed generalisation from LogisticUnitIdentification to Ecom_LogisticUnitIdentification (WR 15-314) } Ecom_GS1_Identification_Ecom_LogisticUnitIdentification < -- TransportStatusNotificationLogisticUnit </pre>	<p>15-000314 Make GS1 identification keys optional in GS1 EDI XML</p>

Change	Associated WR
<p>Created Ecom_ConsignmentIdentification class and changed association from the previous ConsignmentIdentification</p> 	<p>15-000314 Make GS1 identification keys optional in GS1 EDI XML</p>
<p>Created Ecom_LogisticUnitIdentification class and changed association and generalisation from the previous LogisticUnitIdentification</p> 	<p>15-000314 Make GS1 identification keys optional in GS1 EDI XML</p>
<p>Created Ecom_EntityIdentification class and changed association from the previous EntityIdentification</p> 	<p>15-000314 Make GS1 identification keys optional in GS1 EDI XML</p>

7.5 BMS Release 3.4

No work requests. Indirect changes due to upgrade to new Shared and eCom Common libraries.

7.6 BMS Release 3.5

No work requests. Indirect changes due to upgrade to new Shared and eCom Common libraries.

7.7 BMS Release 3.5.1

No work requests. Indirect changes due to upgrade to new Shared and eCom Common libraries.

8 Appendices

Not Applicable

9 Acknowledgements

9.1.1 Work Group

Function	Name	Company / organisation
Co-chair	Rossner (Pottier), Natascha	GS1 France
Co-chair	Schmidt, Tom Eric	August Storck KG
Member	Bemrose, Jonathan	R&R Ice Cream
Member	Bodemer, Petra	dm-drogerie markt GmbH + Co. KG
Member	Boikanyo, Rebone	GS1 South Africa / Consumer Goods Council of South Africa
Member	Canada, ON	M3B 3L1
Member	Carlson, Jim	General Mills, Inc.
Member	Chresta, Richard	GS1 Switzerland
Member	Cook, Don	Wal-Mart Stores, Inc.
Member	Cox, Marc	Philips Electronics N.V.
Member	Darnell, David	Systrends
Member	De Flou, Nele	GS1 Belgium & Luxembourg
Member	Dicks, Arne	GS1 Germany
Member	Duvinger, Karina	GS1 Sweden
Member	Foerderer, Klaus	GS1 Germany
Member	Gathmann, Stefan	GS1 Ireland
Member	Grangard, Anders	GS1 Global Office
Member	Harpell, Eileen	GS1 Community Room Staff
Member	Hand, Phil	JDA Software
Member	Herregodts, Kurt	GS1 Belgium & Luxembourg
Member	Kempkes, Fred	Unilever N.V.
Member	Kernan, Brendan	GS1 Ireland
Member	Kidd, Robin	Nestle
Member	Krid, Anne-Claire	GS1 France
Member	Lanoue, Tom	General Mills, Inc.
Member	Laur, Rita	GS1 Canada
Member	Lenman, Mia	GS1 Sweden
Member	Lerch, Hanjoerg	METRO Group
Member	Moberg, Dale	Axway
Member	Montes de Oca, Alejandra	GS1 Mexico
Member	Ng, Ella	GS1 Australia
Member	Peelen, Esther	GS1 Netherlands
Member	Pelekies, Andreas	GS1 Germany

Function	Name	Company / organisation
Member	Perrier, Patricia	GS1 France
Member	Przybilla, Christian	GS1 Germany
Member	Pujol, Xavier	GS1 Spain
Member	Racek, Greg	Wal-Mart Stores, Inc.
Member	Repetto, Mirko	GS1 Italy
Member	Robba, Steven	1WorldSync Holdings, Inc.
Member	Rosell, Pere	GS1 Spain
Member	Rosenberg, Steven	GS1 US
Member	Schmid, Sue	GS1 Australia
Member	Schneider, Christian	GS1 Switzerland
Member	Sehorz, Eugen	GS1 Austria
Member	Sharma, Vishal	General Mills, Inc.
Member	Shimazaki, Ayako	GS1 Japan
Member	Sion, Emilie	GS1 France
Member	Souza, Nadia	GS1 Brasil
Member	Strand, Roman	GS1 Germany
Member	Tan, Milton	GS1 Malaysia
Member	Tompsett, Simon	Waitrose
Member	Trelle, Ute	1WorldSync Holdings, Inc.
Member	Tse, Steve	GS1 Hong Kong
Member	Tyson, Betty	Knouse Foods Cooperative, Inc
Member	Van den Bergh, Senne	GS1 Belgium & Luxembourg
Member	Van der Eijk, Pim	OASIS - Sonnenglanz Consulting BV
Member	Veldhuis, Saskia	Procter & Gamble Co.
Member	Welch, Shan	GS1 UK
Member	Westerkamp, Jan	GS1 Netherlands
Member	Wilson, Mary	GS1 US
Member	Windsperger, Bekki	Best Buy Co., Inc.
Member	Yang, Shaopeng	GS1 China
Member	Yusdiar, Dani	GS1 Indonesia
Member	Zwanziger, Greg	SUPERVALU

9.1.2 Development Team Members

Function	Name	Organisation
GSMP Process Lead	David Buckley	GS1 Global Office
Technical Development Lead	Miklos Bolyky	GS1 Global Office
Peer Review	Mark Van Eeghem	GS1 Global Office

